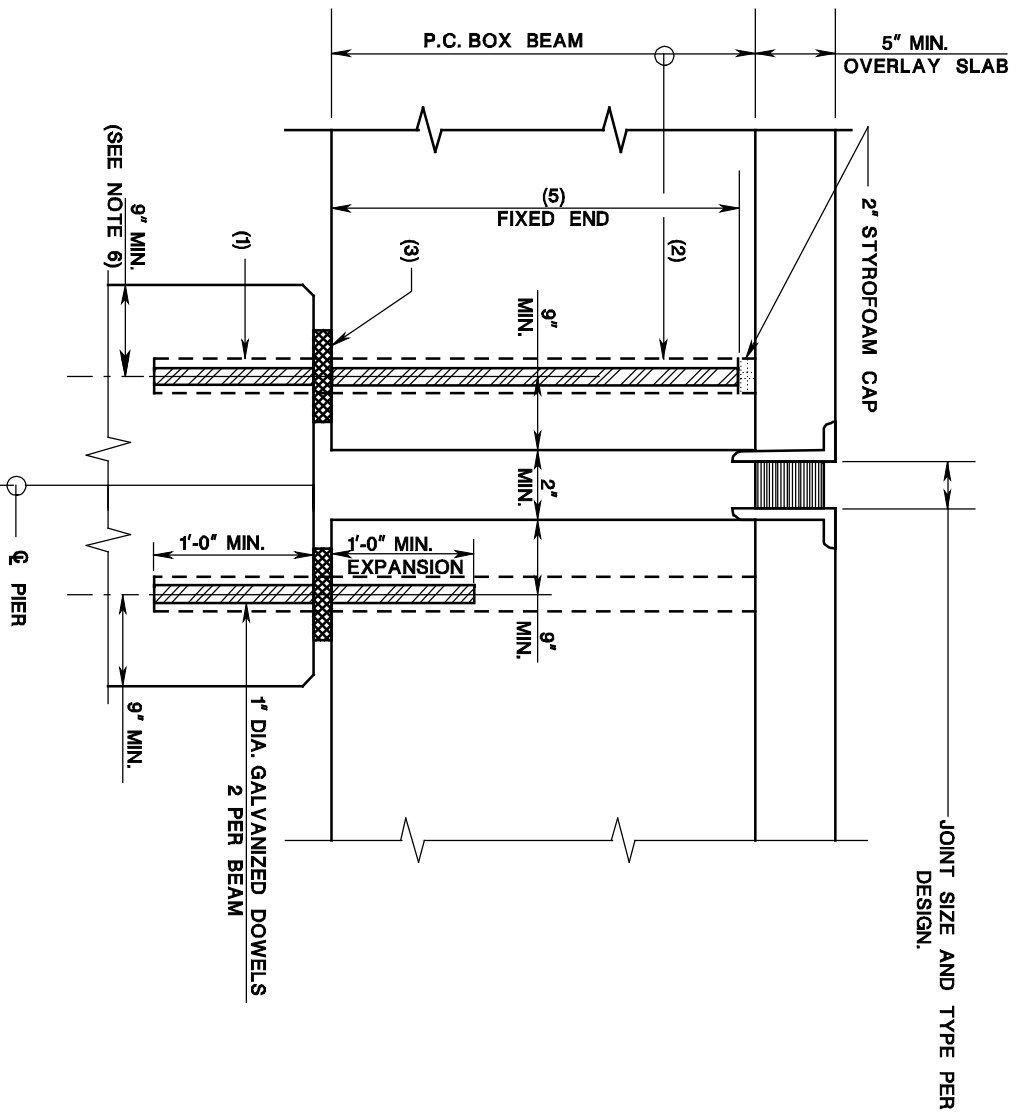


SECTION AT FIXED PIER, PC ADJACENT SLAB AND BOX BEAMS

ISSUED: 2009

PLATE
3.10-5



NOTES:

1. 2" DIA. HOLES IN PIER SEAT TO BE CORED AFTER BEAMS ARE ERECTED AND THE RODS TIGHTENED, EXCEPT FOR RIGID FRAME AND HAMMERHEAD PIERS IN WHICH CASE ANCHOR BOLTS SHALL BE SET IN 3" DIA. SLEEVES, FILLED WITH NON-SHRINK GROUT.
2. FILL WITH MASTIC OR HOT-POURED RUBBER ASPHALT JOINT SEALER AT EXPANSION BEARINGS. FILL WITH NON-SHRINK GROUT OR LOW MODULUS EPOXY MORTAR AT FIXED BEARINGS.
3. FOR ELASTOMERIC BEARING PAD DETAILS SEE PLATE 3.10-9.
4. PIER CAP REINFORCING STEEL SHALL BE CORROSION PROTECTED.
5. DOWELS CUT 2" TO ALLOW FOR STYROFOAM CAP FOR FIXED BEARINGS.
6. SEAT LENGTH SHALL SATISFY SEISMIC DESIGN REQUIREMENTS.